

819 Pacific Avenue Suites #1 and #2

Great location in the heart of downtown Santa Cruz.

Office/creative loft space located on the second floor of Pacific Avenue (above Zachary's). 3 office rooms available plus kitchen-style break room.

Call or email for more information. REG Real Estate, Inc., 3140 Porter St. Suite A, Soquel, CA 95073

831.464.4700 ext. 4705; russell@russellgross.com DRE#00887251



Information provided above, although believed accurate, should be independently verified by Buyers and other interested parties before making a final decision to lease or purchase property. Although information has been provided by sources deemed generally reliable, REG Real Estate, Inc. cannot warranty its accuracy.

819 Pacific Ave. #1 & #2

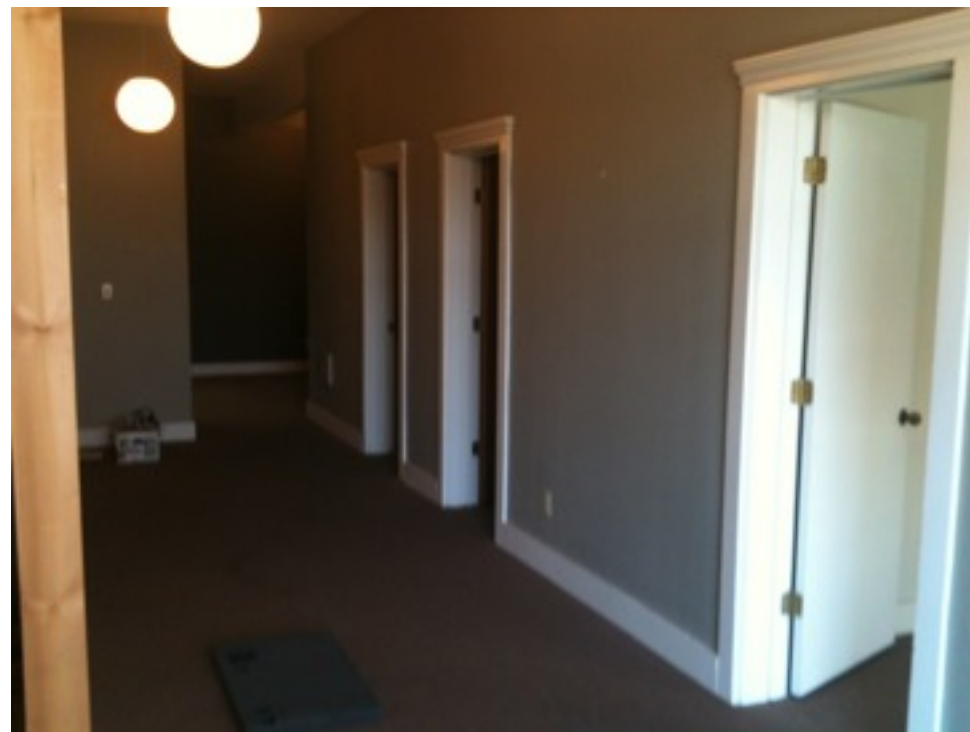
Contemporary partition wall in open area.

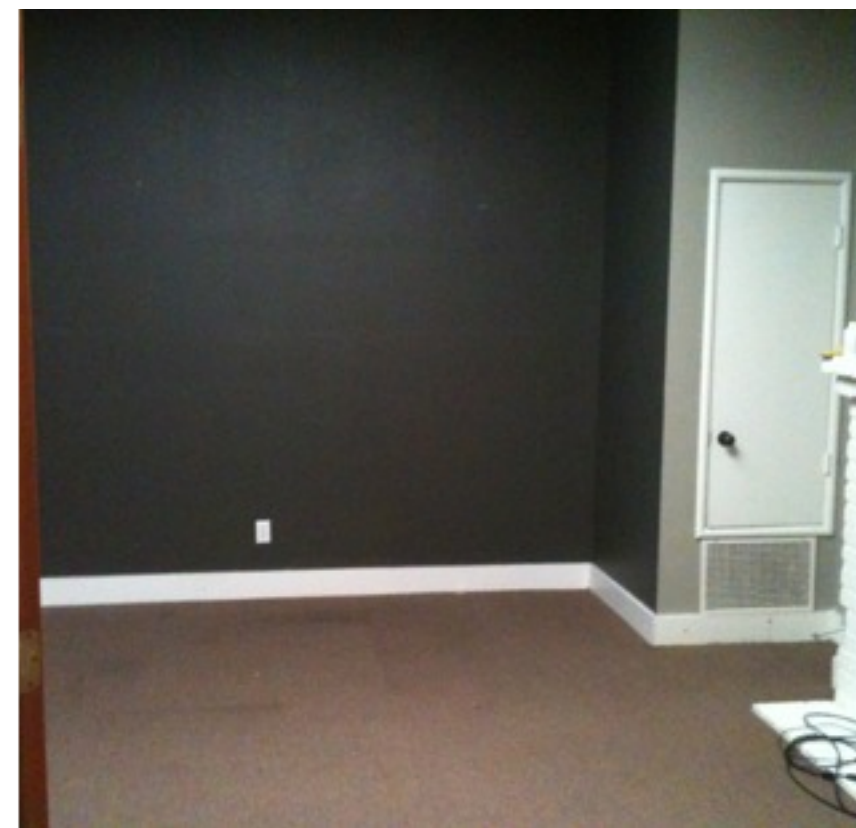
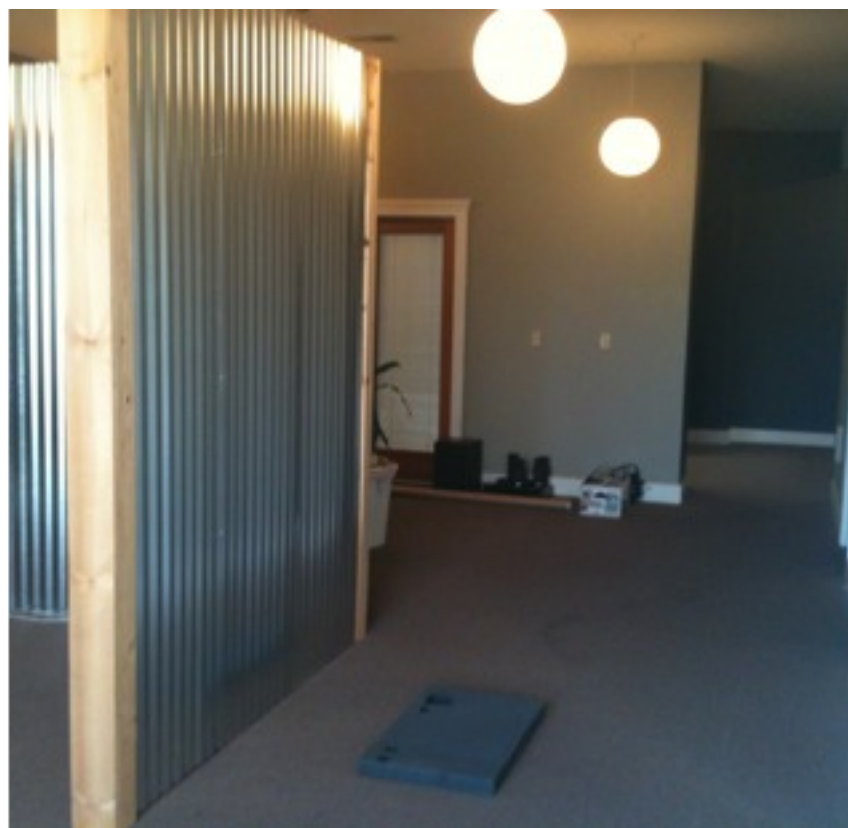
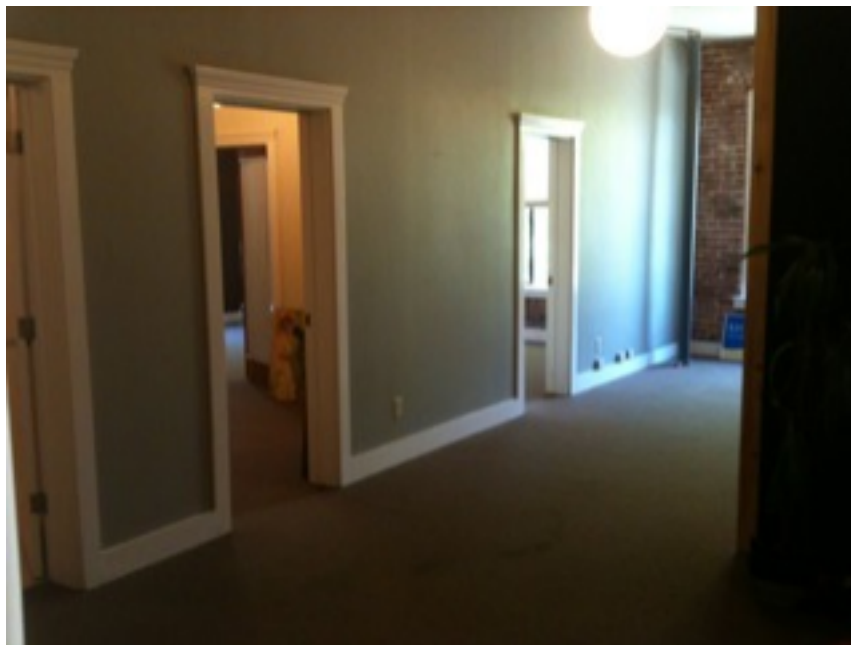
Working gas fireplace in separate room.

1,385 +/- square feet.

\$1.75/sf modified gross lease.

Reserved tenant parking available on building lot (no city parking assessment fees).





819 PACIFIC AVE.

SUITES #1 & #2

819.5 PACIFIC AVE.